

MONTHLY MEMBERSHIP PROGRESS REPORT

District 201V5

Results as of: 1/31/2024

GMT:

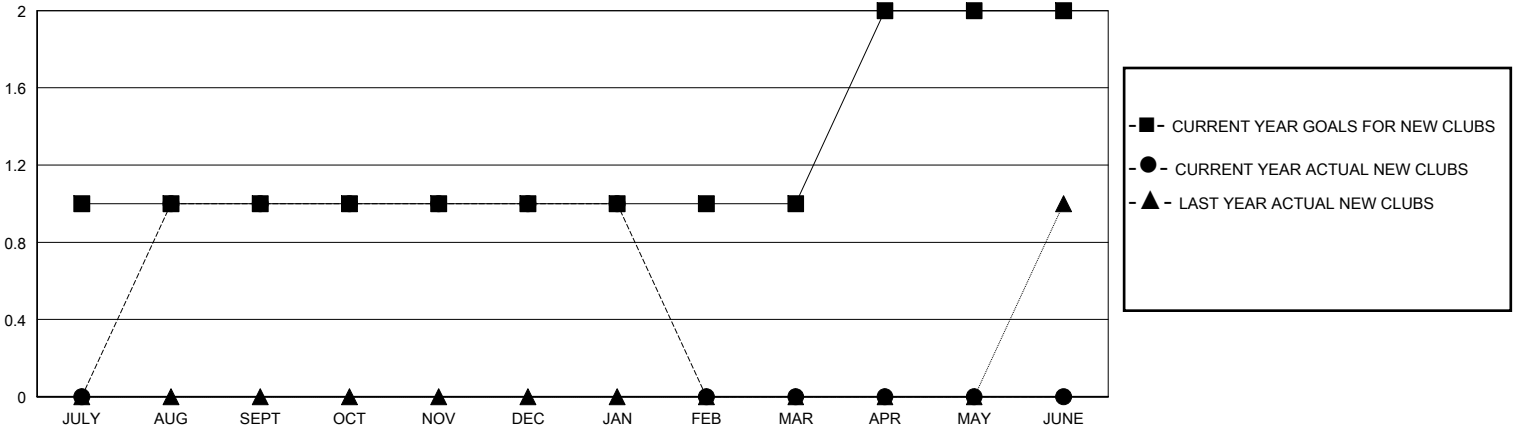
LOCATION AUSTRALIA

GMT CA

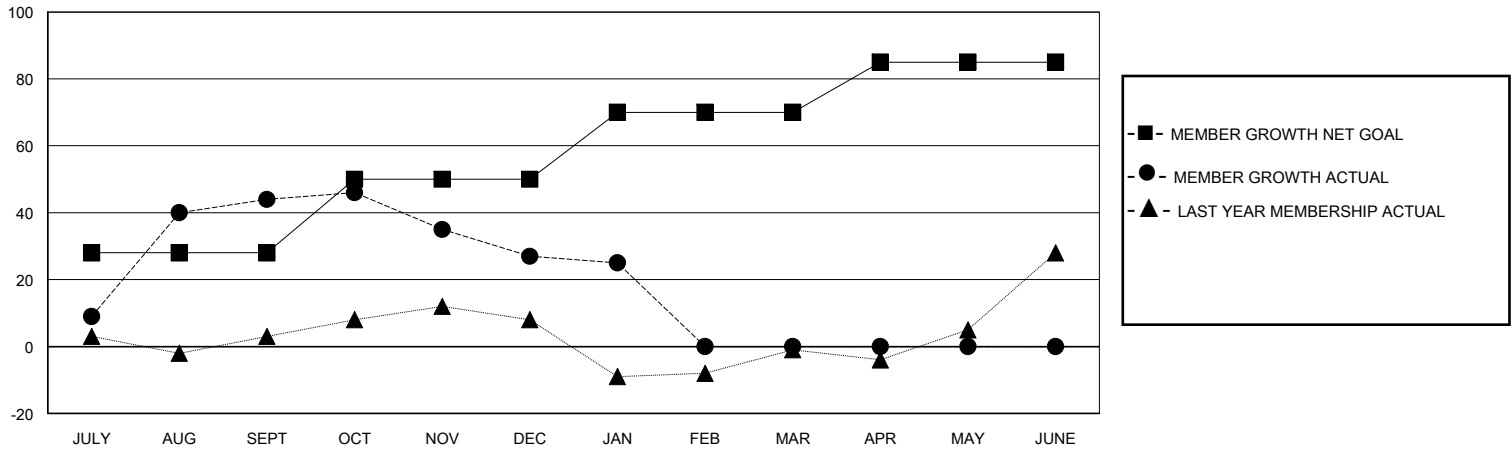
Clubs			
RESULTS FOR 2023-2024			
QUARTER	NEW CLUB GOAL	NEW CLUBS	DROPPED CLUBS
JULY/AUG/SEPT	1	1	1
OCT/NOV/DEC	0	0	0
JAN/FEB/MAR	0	0	0
APR/MAY/JUNE	1	0	0

Members			
RESULTS FOR 2023-2024			
QUARTER	MEMBER GROWTH NET GOAL	MEMBER GROWTH ACTUAL	DROPPED MEMBERS ACTUAL (including transfers)
JULY/AUG/SEPT	28	79	31
OCT/NOV/DEC	22	27	41
JAN/FEB/MAR	20	9	10
APR/MAY/JUNE	15	0	0

GOALS AND ACTUAL NEW CLUBS CUMULATIVE



GOALS AND ACTUAL MEMBERS CUMULATIVE



DROPPED CLUBS: 1	34 CLUBS OF 66 ADDED 1 OR MORE NEW MEMBERS	<u>GENDER DISTRIBUTION</u>	
<u>DROPPED MEMBERS</u>		MALE	790 (62.85%)
DECEASED	5	FEMALE	460 (36.60%)
CLUB CANCELLED	0	TOTAL FAMILY UNIT MEMBERS	
OTHER	77	148	
TOTAL	82	FAMILY MEMBERS PAYING HALF DUES	
		77	

[CLICK HERE FOR CUMULATIVE MEMBERSHIP DATA](#)